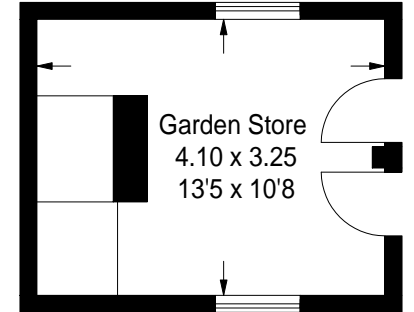
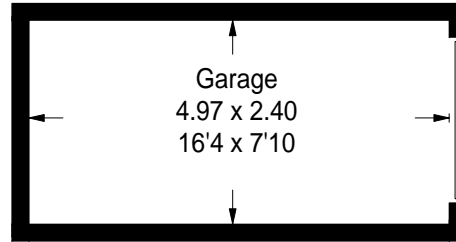
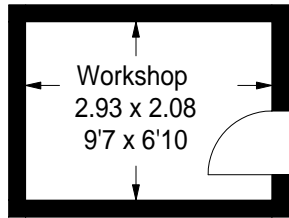


4 Bakers Bridge, Elvetham, Hook, Hampshire, RG27 8AW

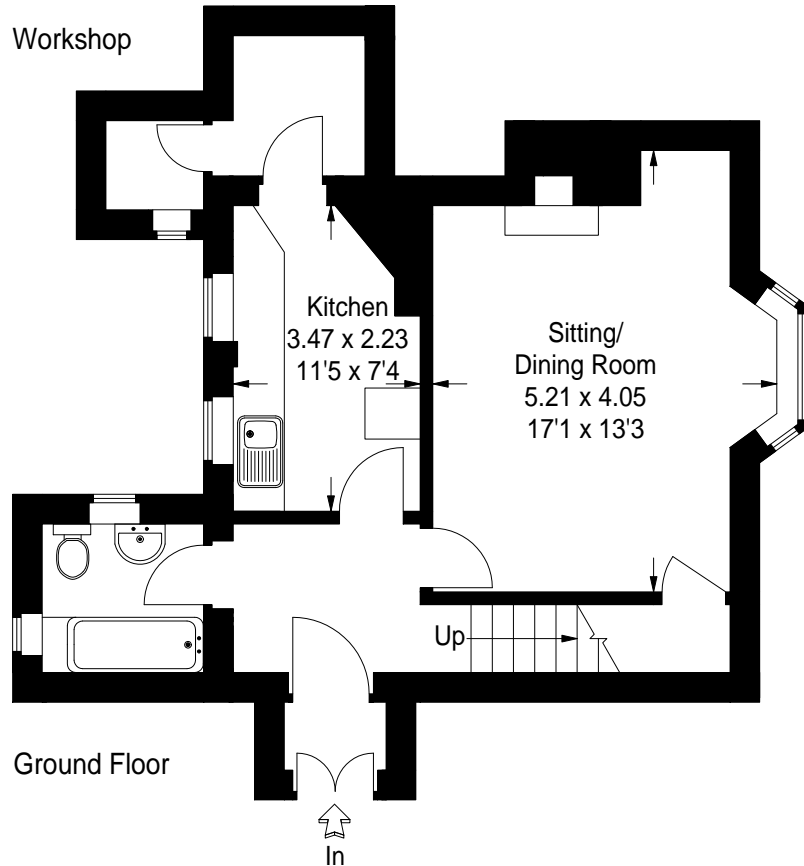


Gross internal area (approx) :- 93 sq m / 1001 sq ft
 Outbuildings :- 31 sq m / 334 sq ft
 Total :- 124 sq m / 1335 sq ft
 Gross External Area :- 119.7 sq m / 1288 sq ft
 Outbuildings :- 39.7 sq m / 427 sq ft
 Total :- 159.4 sq m / 1716 sq ft
 Net Internal Area :- 87.96 sq m / 947 sq ft
 Outbuildings :- 31.29 sq m / 337 sq ft
 Total :- 119.25 sq m / 1284 sq ft

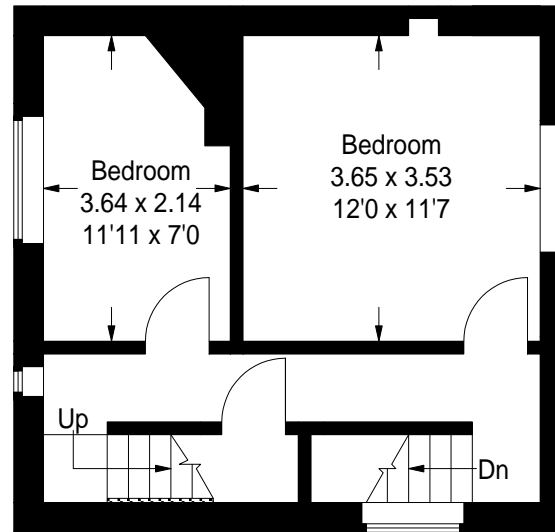
For identification only. Not to scale.
 © Floorplanz Ltd



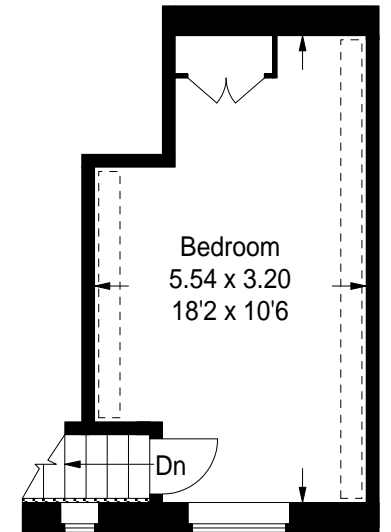
(Not Shown In Actual Location/ Orientation)
 Garden Store



Garage



First Floor



Second Floor